

# Amphitrite water recreational activities center

**One entry per day and per person included in the fare.**

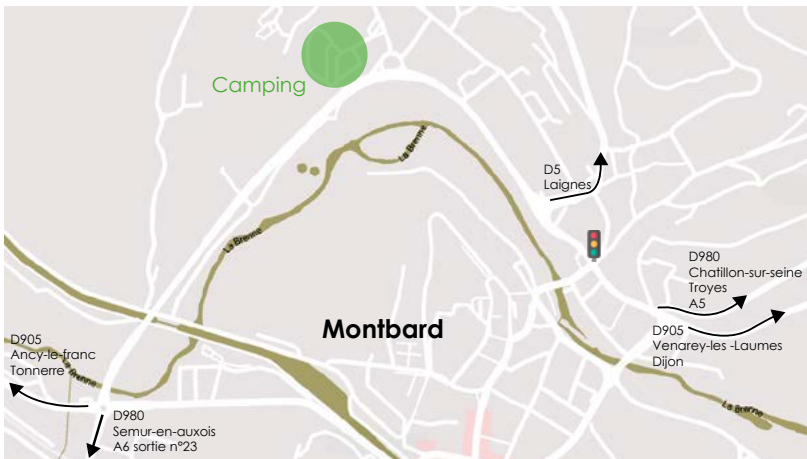
Tél. 03 80 89 15 20

Open all year, 3000 m2, 4 small pools :

- \* 25m pool
- \* Waving pool,
- \* Outdoor/Indoor play pool linked
- A padding pool, a 45m toboggan
- \* Sauna – Hammam , Massage-jets, whirlpool, bubble bench,jacuzzi (6 €)



## AREA MAP



**Highway**, from Nord exit A6 Bierre les Semur n°23  
from Sud exit A6 Pouilly en Auxois n°24



**Railway station TGV**  
1 h Paris gare de Lyon  
2h10 Lille

## MUNICIPAL CAMPSITE



## Prices - Season 2024

Tel : + 33 (0)3 80 92 69 50  
Email: [accueil.camping@montbard.fr](mailto:accueil.camping@montbard.fr)  
Site : [www.montbard.fr](http://www.montbard.fr)

Rue Michel Servet  
21500 Montbard

GPS : N 47°37'52" E 4°19'56"



# TOURIST ATTRACTIONS

## Montbard, Buffon city , not to be missed

A classified Buffon Museum, with :



- \* Old Orangerie
- \* Buffon grounds/garden
- \* Aubespain Tower
- \* Saint-Louis Tower
- \* Buffon Mansion (Louis XV style)
- \* Museum fine Arts



Ville Fleurie  
\*\*\*

## A highly touristic area, in the middle of Burgundy

Surroundings to be seen :

- \* Fontenay Abbey (World Heritage)
- \* Buffon Great Ironworks (forges)
- \* Flavigny sur Ozerain (fortified village)
- \* MuséoParc Alésia
- \* Semur-en-Auxois (Medieval city)
- \* Bussy-Rabutin (Renaissance Castle)



© Abbaye de Fontenay

# THE CAMPSITE

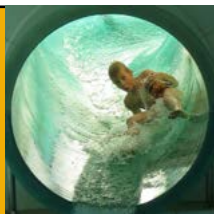
## Campsite on 2.5 ha tree-shaded

- \* 78 equipped pitches (each 100 m<sup>2</sup>)
- \* 2 High conveniences mobil-home lending and 19 mini-chalets
- \* Volley, petanque, ping-pong, billiard table and foot table
- \* Free tennis court
- \* Children plays and summer animations
- \* Summerhouse for picnic tables , barbecues places
- \* Washing machine, drying cabinet, irons and ironing boards
- \* Free block of ice freezer service
- \* Baby room (changing table, bathtub)
- \* Baby bed and high chair for rent (depending on availability)
- \* T.V room, organised evenings in July and August
- \* Draining service area, top up water for motor caravan
- \* Fresh bread available
- \* Shopping center at 1,3 km



Riding stable  
Tél : 06 31 30 76 87

Water recreational activities center  
One entry per day and per person included in the  
fare Tél. 03 80 89 15 20



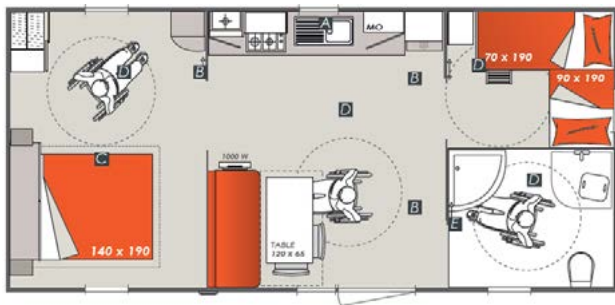
# 1 MOBIL HOME 4 persons 34 m<sup>2</sup>

Dimensions : 8.5 m x 4 m / Bedding : 4 + 2



## Bedding 6 Persons

1 Double bed (140x190) – 1<sup>o</sup> room  
 2 single beds (70x190) – 2<sup>o</sup> room  
 A sofa bed,  
 Tableware : 6 persons



# 1 MOBIL HOME 4 persons 28 m<sup>2</sup>

Dimensions : 7.2 m x 4 m / Bedding : 4 + 2

## Bedding 6 Persons

1 double bed (140x190) – 1 room  
 4 single beds (70x190) – 1 room  
 A sofa bed,  
 Tableware : 6 persons




# MOBIL-HOME on a shaded camping pitch

## Internal equipment

Hob : 4 electric rings, Fridge/Freezer (215L), Dishwasher– microwave oven, Electric oven , Extractor fan, Electric water heater, Electric heater, Television, Lavatories, MEV (Continuous mechanical extract ventilation), in the bathroom and the kitchen , Rolling shutters, Rolläden.

Blankets and pillows available.

**Half sheltered terrace outside** with table and chairs

	From 30 march to 27 september <i>Tourist tax in addition</i>	<u>Low season</u> 30/03-26/04 31/08-27/09	<u>Middle season</u> 27/04-05/07 24 au 30/08	<u>High season</u> 06/07 au 23/08
4+2 28m <sup>2</sup>	<b>Per night</b>	53 €	70 €	98 €
	<b>One week 7 nights (-20%)</b>	296,80 €	392 €	548,80 €
4+2 34m <sup>2</sup> 	<b>Per night</b>	60 €	79 €	110 €
	<b>One week 7 nights (-20%)</b>	336 €	442,40 €	616 €

**Reservations from Saturday to Saturday in high season.**

**Minimum 2 nights the rest of the year**

**Short stays accepted in high season only at last minute. From 3 to 6 nights : -10%**

**Pet** : 4€ (only one per mobil-home)

**Disposable sheets** : 4,5€ (bed 70cm) ; 8€ (bed 140cm)

**Booking fees** : 15 €

**Tourist tax** : 0,65€ for each person per night

**Deposit** : 25 % of the amount of the booking to be joined when reserved (not refundable)

**Payement methods** : credit card or cash

**Balance** : the day of arrival

**Guarantee** : 185 € on arriving (check) It will be given back to you at the end of your staying according to the inventory of the lending and cleanliness.

Otherwise, a set price for cleaning will be asked (70€).

**Please kindly notice that we do not supply for sheets nor pillowcases.**



**Departure in the morning (before 10 a.m.) or arrival in the afternoon (from 4 p.m.) possible subject to availability or by reservation: charged €45**

# Reception's opening hours

Month	Morning	Afternoon
April	10h00-12h00	15h00-19h00
May	10h00-12h00	15h00-19h00
June	10h00-12h00	15h00-19h00
July and August	10h00-12h00	15h00-19h00
September	10h00-12h00	15h00-19h00

Services - Prices per night locations opened from 30/03 to 27/09	30/03 au 05/07 24/08 au 27/09		06/07 au 23/08	
	Each person (adult) (shower included)	5,10 €		6,50 €
Each adolescent (13 to 18 years old) shower included	4,00 €		6,00 €	
Each child from 3 to 12 years old (shower included)	3,80 €		5,00 €	
Each child less than 3 years old	Free			
Visitor (shower)	2,00 €			
Each pet	4,50 €			
Electric wire (16 amperes)	5,00 €			
Equipped pitch 100m² / caravan pitch + car	6,10 €			
Tent pitch + car or motobike	5,00 €			
Tente pitch + bicycle	3,50 €			
Additional tent or car	1,10 €		2,20 €	
Additional car	1,10 €		2,20 €	
Draining area, top up water (off staying)	4,00 €			
Guarded parking lot	4,20 €			
A year pitch lending	950,00 €			
Group 12 minimum (2 adults + electric wire)	19,00 €		-	
ACSI card (2 adults + electric wire + 1 pet)	19,00 €		-	
FFCC members	-10 %		-5 %	
From the 7th night	-10 %		-10 %	
Tourist tax for each person and for each night	0,65 €			
<b>Booking fees</b>	10,50 €			
<b>Departure on the afternoon</b>	4,20 €		5,30 €	



# MINI-CHALET (without sanitary facilities)

## In a dispersed village on the edge of the woods

- \* 19 mini chalets for 4 to 5 persons
- \* Very comfortable toilet block
- \* Available to disabled people
- \* Baby room with bathtub
- \* Playground, ping-pong, petanque
- \* Summerhouse/ pavilion for picnic tables, barbecue places
- \* Leisure room with television, kitchen area with equipment

## Inside the mini-chalets

Kitchen area with :  
electric hob, microwave  
oven, electric coffee  
maker, fridge.  
Pillows available and  
electric heater,

	<b>MINI CHALETS</b> From 30 march to 27 september <i>Tourist tax in addition</i>	<u>Low season</u> 30/03-26/04 31/08-27/09	<u>Middle season</u> 27/04-05/07 24 au 30/08	<u>High season</u> 06/07 au 23/08
<b>Isabelle 12m<sup>2</sup></b> 4 pers.	<b>Per night</b>	<b>35 €</b>	<b>46 €</b>	<b>66 €</b>
	<b>One week 7 nights (-20%)</b>	196 €	257,60 €	369,60 €
<b>Mélèze 12m<sup>2</sup></b> 4 pers.	<b>Per night</b>	<b>41 €</b>	<b>51 €</b>	<b>74 €</b>
	<b>One week 7 nights (-20%)</b>	229,60 €	285,60 €	414,40 €
<b>Olga 17m<sup>2</sup></b> 5 pers.	<b>Per night</b>	<b>39 €</b>	<b>51 €</b>	<b>77 €</b>
	<b>One week 7 nights (-20%)</b>	218,40 €	285,60 €	431,20 €
<b>Epicéa 17m<sup>2</sup></b> 4 pers.	<b>Tarif de base par nuit</b>	<b>47 €</b>	<b>57 €</b>	<b>83 €</b>
	<b>One week 7 nights (-20%)</b>	263,20 €	319,20 €	464,80 €
<b>Just for a step</b>	<b>Accomodation 4 pers.</b>	<b>31 €</b>	<b>42 €</b>	<b>52 €</b>

**Saturday to Saturday in high season.**

**Short stays accepted in high season only at last minute. From 3 to 6 nights : -10%**

**Pet :** 4€ (only one per mobil-home)

**Disposable sheets :** 4,5€ (bed 70cm) ; 8€ (bed 140cm)

**Booking fees :** 15 €

**Tourist tax :** 0,65€ for each person per night

**Deposit :** 25 % of the amount of the booking to be joined when reserved (not refundable)

**Payement methods :** credit card or cash

**Balance :** the day of arrival

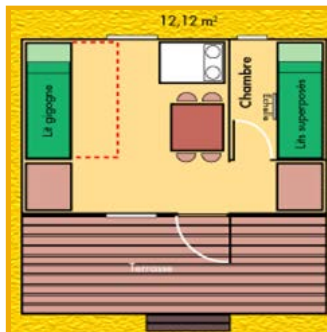
**Guarantee :** 100 € on arriving (check) It will be given back to you at the end of your staying according to the inventory of the lending and cleanliness.

Otherwise, a set price for cleaning will be asked (70€).

**Please kindly notice that we do not supply for sheets nor pillowcases.**

**Departure in the morning (before 10 a.m.) or arrival in the afternoon (from 4 p.m.) possible subject to availability or by reservation: charged €45**

# MINI-CHALET (without sanitary facilities)



## Isabelle model (4 pers.)

12,12 m<sup>2</sup>

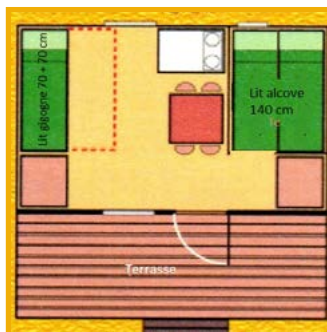
- 1 truckle bed (70+70cm)
- 2 bunk beds 70 cm



## Olga model (5 pers.)

17,24 m<sup>2</sup>

- 2 trucke bed (70+70cm)
- 1 bed 70 cm in height



## Mélèze model (4 pers.)

12,12 m<sup>2</sup>

- 1 trucke bed (70+70cm)
- 1 alcove bed 140 cm



## Epicéa model (4 pers.)

17,24 m<sup>2</sup>

- 1 trucke bed (70+70cm)
- 1 bed 140 cm

